

 **FORZA**



2026 Edition



# Style Quality Innovation

*At Forza, we are driven by innovation, quality, and purposeful design. These principles underpin our commitment to supplying premium, trade-ready products that deliver contemporary styling with long-term durability.*

*Whether supporting residential developments or large-scale commercial projects, our solutions are built to provide reliable performance, refined aesthetics, and lasting value. Ensuring every installation meets professional standards and leaves a lasting impression.*

# Bringing Longevity To Surface Finishings

*"We're committed to creating sustainable surface-finishing solutions that bring together style, strength, and real world practicality. Our focus is on designing innovative materials that elevate both residential and commercial spaces without compromising our responsibility to the environment. Quality and sustainability aren't just part of our process; they're the foundation of every product we deliver."*



# Introduction

*Forza is a leading distributor of contemporary and classical range of surface finishing products. We believe in delivering excellence through our extensive range of designs, products and services. Our goal is to curate a collection that embodies quality and sophistication; this can be seen through the captivating & durable indoor and outdoor ranges we offer. Thinking of redesigning? Forza's surface finishing products transform spaces into a personal well-being haven. Choose from our large variety of bathroom panels, cladding, feature walls, composite flooring, tiles, accessories and an array of outdoor products.*

## Our Vision

*To deliver our customers with the highest quality of service. Our vision is to be the UK's most innovative brand of surface finishing products and to be able to deliver the 'WOW' factor through our products and services.*

## Our Journey

*Our journey is fuelled by a passion for elevating spaces, enriching experiences, and building lasting relationships. Rooted in our dedication to excellence, Forza invites you to embark on a journey where quality meets distinction.*

*Join us as we redefine spaces, one surface at a time, and set the benchmark for unparalleled craftsmanship and service of surface finishing.*

# INDOOR

*At Forza, we offer a diverse range of indoor products to suit various styles and needs. Our selection includes durable PVC Wall Panels, Acoustic and Wood Composite Panels for sound management, and versatile SPC flooring for high-traffic areas. Complemented by our elegant indoor tiles, Forza delivers quality and innovation for superior surface finishing solutions.*

*SPC Flooring Grey Onyx*

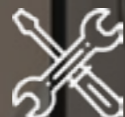
# CLADDING MODERNA COLLECTION

Our Moderna Cladding Collection features sleek designs and smooth, durable finishes that bring a contemporary touch to any space. Perfect for both interiors and exteriors, this collection offers a stylish, lasting solution for modern architectural statements.



#### MOISTURE RESISTANT

Perfect for kitchens, bathrooms, and commercial spaces where humidity levels are high.



#### EASY INSTALLATION

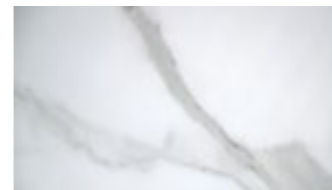
Lightweight panels designed for rapid installation — ideal for both new builds and refurbishments.



#### COST-EFFECTIVE SOLUTION

A perfect balance of performance, appearance, and affordability — a cost-effective choice for interiors.

## PVC Cladding



### Carrara Marble

L2700 x W250 x T8mm    PVC2700CAMA  
Gloss    12 PCS/CTN



### Light Grey Marble

L2700 x W250 x T8mm    PVC2700XLGM  
Gloss    12 PCS/CTN



### Pergamon

L2700 x W250 x T8mm    PVC2700XXPE  
Gloss    12 PCS/CTN



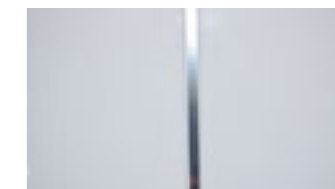
### Carrara Gold

L2700 x W250 x T8mm    PVC2700CAGO  
Gloss    12 PCS/CTN



### Carrara Marble SS

L2700 x W250 x T8mm    PVC2700CAMS  
Gloss    12 PCS/CTN



### White SS

L2700 x W250 x T8mm    PVC2700XWSS  
Gloss    12 PCS/CTN



### White Gloss

L2700 x W250 x T8mm    PVC2700XXWG  
L5000 x W250 x T8mm    PVC5000XXWG  
Gloss    12 PCS/CTN



### White Matt

L2700 x W250 x T8mm    PVC2700WHMT  
Matt    12 PCS/CTN



### White Tiline

L2700 x W250 x T8mm    PVC2700WHTI  
Gloss    12 PCS/CTN



### White Sparkle

L2700 x W250 x T8mm    PVC2700XXWS  
Gloss    12 PCS/CTN



### White Sparkle SS

L2700 x W250 x T8mm    PVC2700WSSS  
Gloss    12 PCS/CTN



### Concrete Grey

L2700 x W250 x T8mm    PVC2700XGGM  
Matt    12 PCS/CTN



# CLADDING TILE COLLECTION

Introducing the Tile Collection, where innovative cladding meets the timeless appeal of tiles. Designed to replicate the sleek look of tiles with the practicality of cladding, this range offers a durable and stylish solution for modern interiors and exteriors. Perfect for those seeking elegance and functionality in one seamless package.



## DURABLE

Built to withstand daily use while maintaining its premium finish year after year.



## VISUAL IMPACT

Elevate interiors with clean lines and refined surface detail. Adds character and sophistication to any space.



## LOW MAINTENANCE

Easy to clean and maintain, keeping interiors looking fresh with minimal effort. Ideal for busy environments.



### Tile Effect Cutline Panel Balloch Tile

L2700xW600xT8mm PVC2700BATI-600  
Matt 2PCS/CTN



### Tile Effect Cutline Panel Elgin Tile

L2700xW600xT8mm PVC2700ELTI-600  
Matt 2PCS/CTN



### Tile Effect Cutline Panel Nairn Tile

L2700xW600xT8mm PVC2700NATI-600  
Matt 2PCS/CTN



### Tile Effect Cutline Panel Tarbet Tile

L2700xW600xT8mm PVC2700TATI-600  
Matt 2PCS/CTN



### Tile Effect Cutline Panel Wick Tile

L2700xW600xT8mm PVC2700WITI-600  
Matt 2PCS/CTN



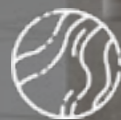
### Tile Effect Cutline Panel Carrara Marble

L2700xW600xT8mm PVC2700CATI-600  
Matt 2PCS/CTN



# WALL PANELS

Our Wall Panels offer a stylish, durable solution for transforming bathrooms. With a variety of finishes, they are easy to install and maintain, adding elegance to any space. Ideal for both residential and commercial projects, they bring a sleek, modern touch to any environment.



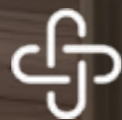
## LUXURY STONE AESTHETIC

Premium marble, onyx, and concrete designs that elevate any interior. Delivers a high-end look without the cost or weight of real stone.



## GLOSS & MATT OPTIONS

Available in both high-gloss and soft-matt finishes to suit any style. Perfect for creating modern, classic, or minimalist spaces.



## SEAMLESS JOINT DESIGN

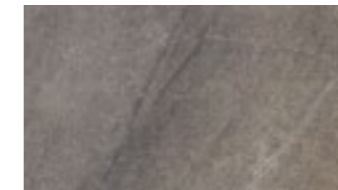
Large-format panels offer a smooth, continuous appearance. Fewer joints mean a cleaner, more polished overall finish.

## PVC Wall Panels



### Apollo Ocean Marble

L2400xW1000xT10mm PVC2400APOM  
Gloss 1PCS/CTN



### Astra Grey Onyx

L2400xW1000xT10mm PVC2400ASTG  
Gloss 1PCS/CTN



### Urban Metallic Matt

L2400xW1000xT10mm PVC2400WTSM  
Matt 1PCS/CTN



### White Concrete Matt

L2400xW1000xT10mm PVC2400COWM  
Matt 1PCS/CTN



### White Gold

L2400xW1000xT10mm PVC2400WHGO  
Gloss 1PCS/CTN



### Tulsony Gold Marble

L2400xW1000xT10mm PVC2400TUGM  
Gloss 1PCS/CTN



### Carrara Marble Matt

L2400xW1000xT10mm PVC2400CMMT  
Matt 1PCS/CTN



### Concrete Beige

L2400xW1000xT10mm PVC2400COBW  
Matt 1PCS/CTN



### Carrara Gold

L2400xW1000xT10mm PVC2400CMGO  
Gloss 1PCS/CTN



Carrara Gold

# PVC Wall Panels



## White Gloss

L2400xW1000xT10mm PVC2400XXWG  
Gloss 1PCS/CTN



## White Pearlescent

L2400xW1000xT10mm PVC2400WHPE  
Gloss 1PCS/CTN



## White Shimmer

L2400xW1000xT10mm PVC2400WHSH  
Gloss 1PCS/CTN



## White Sparkle

L2400xW1000xT10mm PVC2400WHSP  
Gloss 1PCS/CTN



## White Marble

L2400xW1000xT10mm PVC2400WHMA  
Gloss 1PCS/CTN



## Carrara Marble

L2400xW1000xT10mm PVC2400CAMA  
Gloss 1PCS/CTN



## Classic Grey Marble

L2400xW1000xT10mm PVC2400CLGM  
Gloss 1PCS/CTN



## Light Grey Marble

L2400xW1000xT10mm PVC2400XLGM  
Gloss 1PCS/CTN



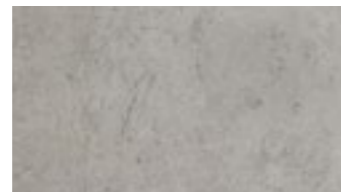
## Italian Marble

L2400xW1000xT10mm PVC2400ITMA  
Gloss 1PCS/CTN



## Alabaster Marble Gloss

L2400xW1000xT10mm PVC2400ALMG  
Gloss 1PCS/CTN



## Alabaster Marble Matt

L2400xW1000xT10mm PVC2400ALMM  
Matt 1PCS/CTN



## London Brick

L2400xW1000xT10mm PVC2400LBRG  
Gloss 1PCS/CTN

# PVC Wall Panels



## Pergammon

L2400xW1000xT10mm PVC2400XXPE  
Gloss 1PCS/CTN



## Sand Marble

L2400xW1000xT10mm PVC2400SAMA  
Gloss 1PCS/CTN



## Ivory Birch

L2400xW1000xT10mm PVC2400IVBR  
Gloss 1PCS/CTN



## Grey Sparkle

L2400xW1000xT10mm PVC2400XXGS  
Gloss 1PCS/CTN



## Graphite Marble

L2400xW1000xT10mm PVC2400GPMA  
Gloss 1PCS/CTN



## Medium Concrete

L2400xW1000xT10mm PVC2400XXMC  
Matt 1PCS/CTN



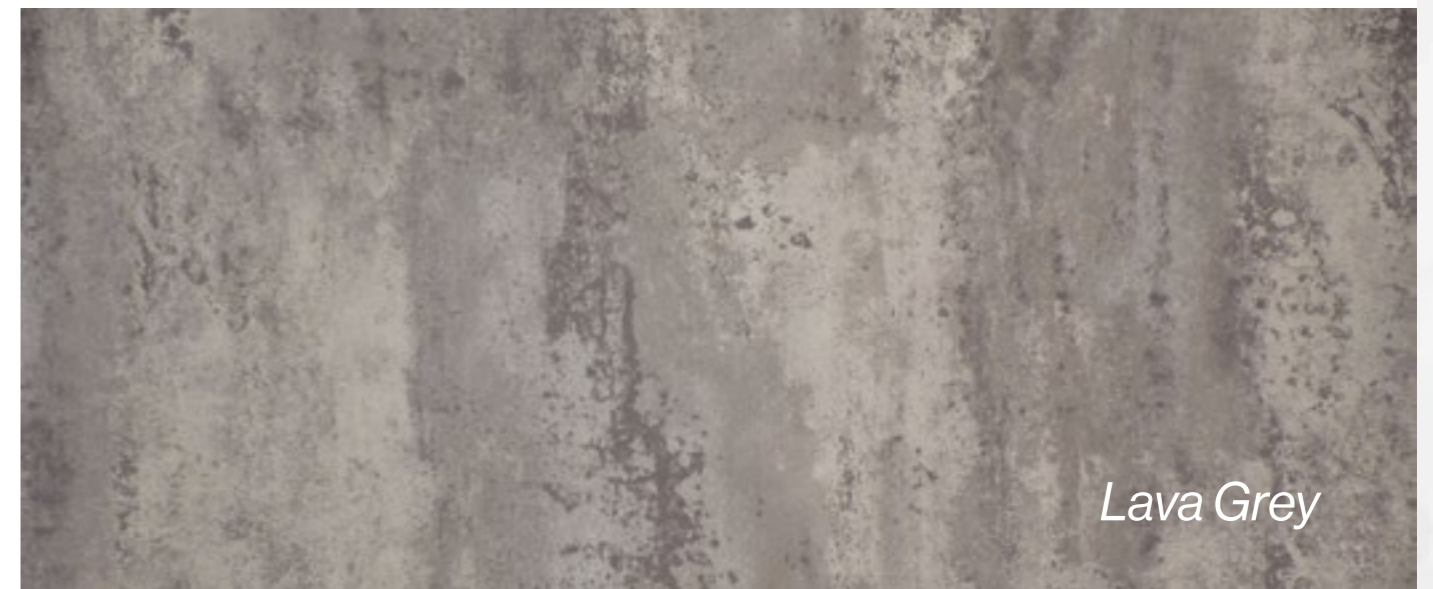
## Lava Grey

L2400xW1000xT10mm PVC2400LAGR  
Gloss 1PCS/CTN



## Medium Concrete Gloss

L2400xW1000xT10mm PVC2400MCGL  
Gloss 1PCS/CTN



# UV PANELS

At Forza, we pride ourselves on offering an impressive array of indoor product ranges tailored to meet varied aesthetic preferences and functional needs. Our UV Panels provide both durability and style for interior spaces while adding a touch of contemporary design.



## ULTRA-THIN 3MM DESIGN

Slim, modern construction that reduces bulk without sacrificing strength. Perfect for projects where space, weight, or precision matters.



## LIGHTWEIGHT & EASY TO HANDLE

Significantly lighter than standard panels for effortless installation. Ideal for single-person fitting and high-volume commercial jobs.



## FLEXIBLE & ADAPTABLE

Slight flexibility allows easier fitting around uneven surfaces or tight areas. Enhances versatility during installation without compromising durability.

*Black Marble*



### White Gloss

L2440 x W1220 x T3mm

Gloss

UV2440WHGL

1PCS/CTN



### Clyde Gloss

L2440 x W1220 x T3mm

Gloss

UV2440CLGL

1PCS/CTN



### Carrara Marble

L2440 x W1220 x T3mm

Gloss

UV2440CAMA

1PCS/CTN



### Carrara Gold

L2440 x W1220 x T3mm

Gloss

UV2440CAGO

1PCS/CTN



### Burnt Gloss

L2440 x W1220 x T3mm

Gloss

UV2440BUGL

1PCS/CTN



### River Stone

L2440 x W1220 x T3mm

Gloss

UV2440RIST

1PCS/CTN



### Graphite Marble

L2440 x W1220 x T3mm

Gloss

UV2440GRMA

1PCS/CTN



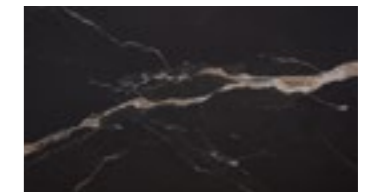
### Grey Marble

L2440 x W1220 x T3mm

Gloss

UV2440GYMA

1PCS/CTN



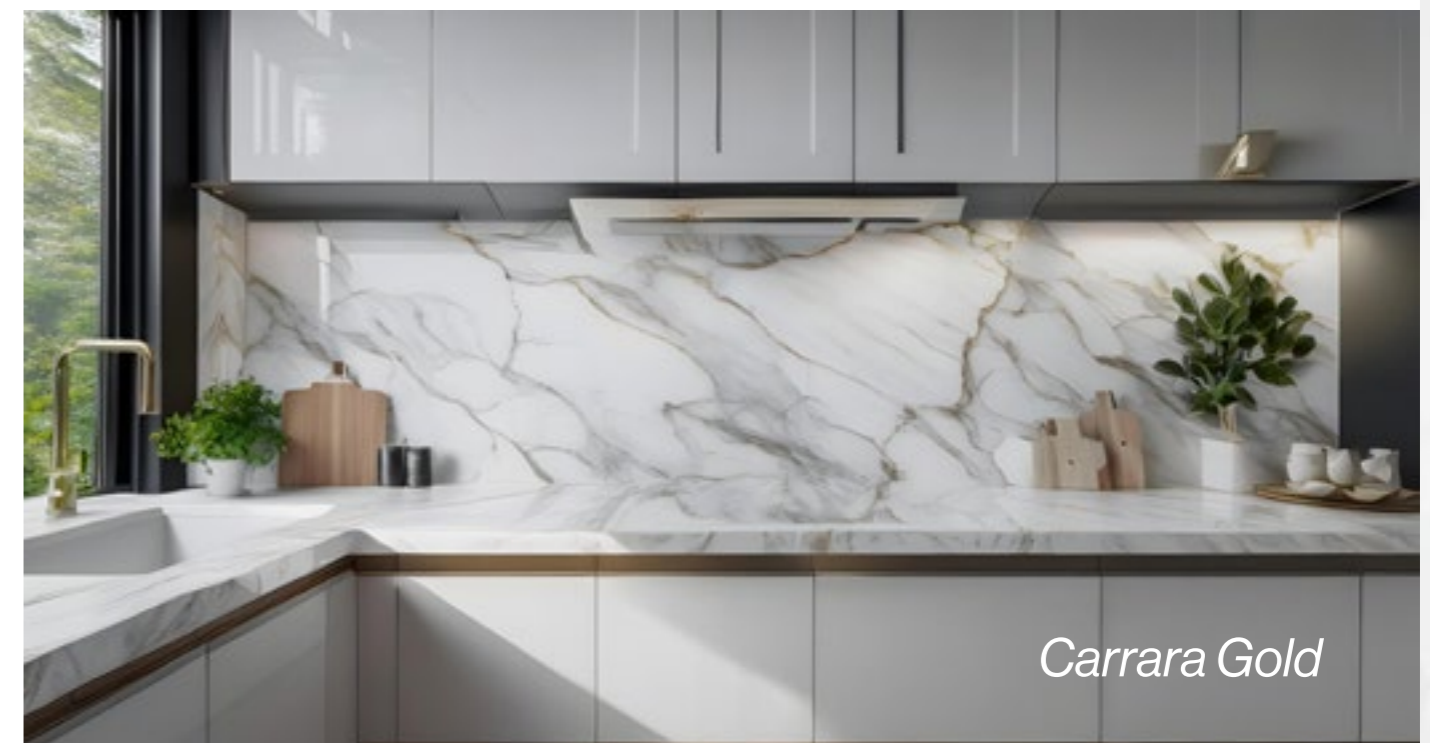
### Black Marble

L2440 x W1220 x T3mm

Gloss

UV2440BLMA

1PCS/CTN



*Carrara Gold*

# Vellura

A brand by GretaGrove

Vellura is a refined panel collection crafted from sustainable bamboo and engineered to be fully waterproof. Combining natural strength with modern innovation, Vellura offers an eco-friendly solution that doesn't compromise on durability or style. Its bamboo core provides a unique balance of resilience and elegance, making it the perfect choice for interiors that demand both performance and a touch of natural sophistication.



## 100% WATERPROOF

Built to resist moisture and humidity, Vellura panels stay strong and flawless in any wet area.



## BAMBOO BASED INNOVATION

Crafted from the same resilient, eco-friendly material as bamboo for natural strength and sustainability.

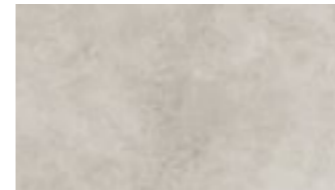


## MODERN AESTHETIC

Adds a sleek, contemporary look to outdoor spaces with clean lines and stylish finishes

## Vellura Solid Core Panels

2400mm x 1000mm



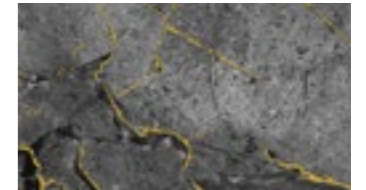
### Light Concrete

L2400 x W1000 x T10mm VEL1000LCON  
Gloss 1PCS/CTN



### Carrara Marble

L2400 x W1000 x T10mm VEL1000CRMR  
Gloss 1PCS/CTN



### Tulsony Gold

L2400 x W1000 x T10mm VEL1000TUGL  
Gloss 1PCS/CTN



### Lux Marble

L2400 x W1000 x T10mm VEL1000LXMR  
Gloss 1PCS/CTN



### Black Marble

L2400 x W1000 x T10mm VEL1000BLMR  
Gloss 1PCS/CTN



### Light Grey Marble

L2400 x W1000 x T10mm VEL1000LGMR  
Gloss 1PCS/CTN



### Graphite Marble

L2400 x W1000 x T10mm VEL1000GRMR  
Gloss 1PCS/CTN



### Black Concrete

L2400 x W1000 x T10mm VEL1000BLKC  
Gloss 1PCS/CTN



### Sandstone

L2400 x W1000 x T10mm VEL1000SSTN  
Gloss 1PCS/CTN



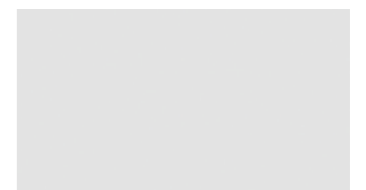
### Travertine

L2400 x W1000 x T10mm VEL1000TRAV  
Gloss 1PCS/CTN



### Molten Mocha

L2400 x W1000 x T10mm VEL1000MLMO  
Gloss 1PCS/CTN



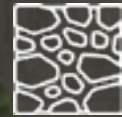
### White Gloss

L2400 x W1000 x T10mm VEL1000WHGL  
Gloss 1PCS/CTN

Tulsony Gold

# PU STONE

Introducing our PU Stone Panels, a revolutionary blend of lightweight durability and stunning stone aesthetics. Crafted from premium polyurethane, these panels replicate the natural beauty of stone with exceptional precision, offering a practical and cost-effective alternative to traditional materials. Perfect for creating textured, modern, or rustic designs, they are easy to install, versatile, and built to last. Transform your interiors and exteriors with the elegance and charm of stone, minus the weight and hassle.



## NATURAL STONE APPEARANCE

Realistic textures and colour variations mimic the look of genuine stone slabs. Delivers a premium, high-end finish without the cost or weight of real stone.



## ULTRA-LIGHTWEIGHT DESIGN

Constructed from durable PU foam for effortless lifting and handling. Ideal for fast installation and projects where weight is a concern.



## STRONG & IMPACT-RESISTANT

Engineered to withstand daily wear while maintaining visual integrity. Durable surface structure ensures long-lasting performance indoors.



### Eggshell Stone

L1200xW600xT50mm PUSTES1200600  
Textured Stone 6PCS/CTN



### Rustic Clay Stone

L1200xW600xT50mm PUSTRC1200600  
Textured Stone 6PCS/CTN



### Pebble Grey Stone

L1200xW600xT50mm PUSTPG1200600  
Textured Stone 6PCS/CTN



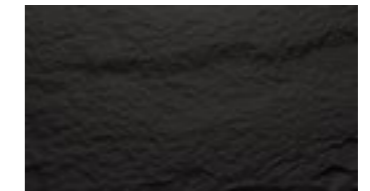
### Pure White Stone

L1200xW600xT50mm PUSTPW1200600  
Textured Stone 6PCS/CTN



### Sandstone Stone

L1200xW600xT50mm PUSTSS1200600  
Textured Stone 6PCS/CTN



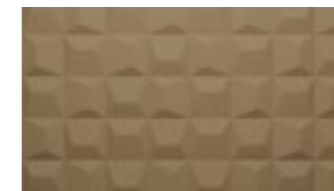
### Midnight Black Stone

L1200xW600xT50mm PUSTMB1200600  
Textured Stone 6PCS/CTN



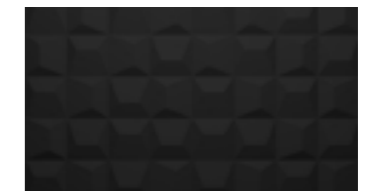
### Pure White Cube

L1200xW600xT25mm PUSTPW1200600CD  
Cubed Matt 12PCS/CTN



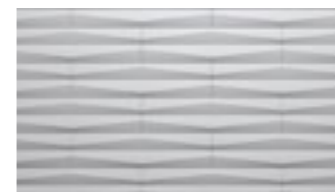
### Sandstone Cube

L1200xW600xT25mm PUSTSS1200600CD  
Cubed Matt 12PCS/CTN



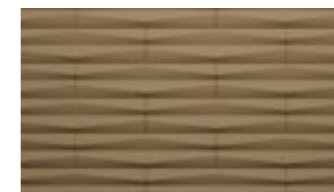
### Midnight Black Cube

L1200xW600xT25mm PUSTMB1200600CD  
Cubed Matt 12PCS/CTN



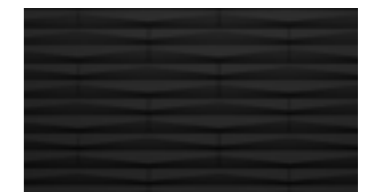
### White line

L1200xW600xT25mm PUSTPW1200600LD  
Linear Matt 12PCS/CTN



### Sandstone Line

L1200xW600xT25mm PUSTSS1200600LD  
Linear Matt 12PCS/CTN



### Midnight Black Line

L1200xW600xT25mm PUSTMB1200600LD  
Linear Matt 12PCS/CTN

Eggshell Stone

Rustic Clay Stone



## LEAP AHEAD WITH MULTI PURPOSE ADHESIVES

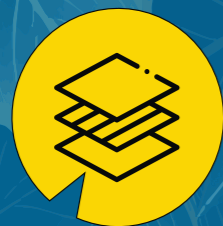
*Froggit Adhesives delivers professional-grade bonding and sealing solutions designed for trade and construction use. Our high-performance adhesives provide strong, reliable bonds across a wide range of materials, while our flexible sealants offer durable, waterproof protection for interior and exterior applications. Trusted by professionals, Froggit is built for strength, speed, and long-lasting results.*



**INDUSTRIAL  
STRENGTH**



**MOULD  
RESISTANT**



**MULTI-PURPOSE  
APPLICATION**



**LONG  
LASTING**



**Multi-Purpose Adhesive**  
290ml FROG290ADWH  
24 PCS/CTN



**White Silicone**  
290ml FROG290SSWH  
24 PCS/CTN



**Clear Silicone**  
290ml FROG290SSCL  
24 PCS/CTN





*Light Grey Oak Embossed*

# SPC FLOORING



## REALISTIC WOOD TEXTURE

Embossed grain pattern replicates the warmth and detail of natural timber. Delivers an authentic, premium look suitable for any interior.



## DURABLE & HARD WEARING

High-density SPC core offers excellent resistance to wear and impact. Ideal for busy commercial and residential environments.



## EASY CLICK INSTALLATION

Simple locking system allows quick, clean, and tool-light fitting. Speeds up project time lines and reduces installation cost.

## REDEFINE YOUR FOUNDATION

*Experience the perfect blend of durability, design, and practicality with SPC Flooring — a next-generation surface solution built for modern living. Crafted from Stone Polymer Composite, each board offers superior strength, water resistance, and dimensional stability, making it ideal for both residential and commercial environments. Available in a choice of stylish tile, classic wooden plank, and elegant herringbone finishes, SPC Flooring delivers timeless beauty with the resilience to withstand everyday wear. The rigid core structure ensures a solid underfoot feel, while integrated underlay options provide added comfort and sound insulation. Easy to install and effortless to maintain, it's flooring designed to perform and impress — from the ground up.*



*Midnight Grey Herringbone*

# SPC Flooring

## Wood Embossed Finish



### White Oak

L1220 x W181 x T5.35mm SPC535AWHOA  
 Wear Layer 0.55mm 10 PCS/CTN  
 IXPE Layer 1mm 2.2 SQM/PACK



### Light Grey Oak

L1220 x W181 x T5.35mm SPC535AW0006  
 Wear Layer 0.55mm 10 PCS/CTN  
 IXPE Layer 1mm 2.2 SQM/PACK



### Grey Oak

L1220 x W181 x T5.35mm SPC535AW0015  
 Wear Layer 0.55mm 10 PCS/CTN  
 IXPE Layer 1mm 2.2 SQM/PACK



### Victorian Oak

L1220 x W181 x T5.35mm SPC535AW0019  
 Wear Layer 0.55mm 10 PCS/CTN  
 IXPE Layer 1mm 2.2 SQM/PACK



### Medium Oak

L1220 x W181 x T5.35mm SPC535MEOA  
 Wear Layer 0.55mm 10 PCS/CTN  
 IXPE Layer 1mm 2.2 SQM/PACK



### Antique Country Oak

L1220 x W181 x T5.35mm SPC535AW0027  
 Wear Layer 0.55mm 10 PCS/CTN  
 IXPE Layer 1mm 2.2 SQM/PACK



### Black Wood

L1220 x W181 x T5.35mm SPC535AW0023  
 Wear Layer 0.55mm 10 PCS/CTN  
 IXPE Layer 1mm 2.2 SQM/PACK



### English Oak

L1220 x W181 x T5.35mm SPC535AW0029  
 Wear Layer 0.55mm 10 PCS/CTN  
 IXPE Layer 1mm 2.2 SQM/PACK



*Antique Country Oak*



*Black Wood*



*English Oak*

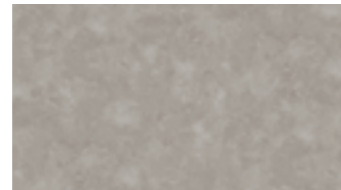
# SPC Flooring

## Tile Finish



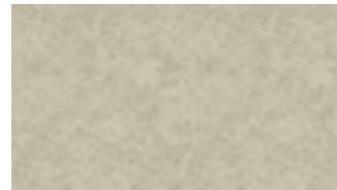
**Carrara Marble**

L620xW310xT5.35mm SPC535T806  
Wear Layer 0.55mm 10 PCS/CTN  
IXPE Layer 1mm 1.85 SQM/PACK



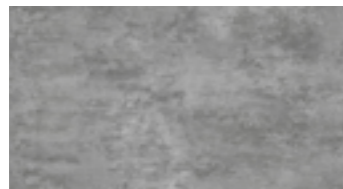
**Pinnacle Bone**

L620xW310xT5.35mm SPC535AW8000-50  
Wear Layer 0.55mm 10 PCS/CTN  
IXPE Layer 1mm 1.85 SQM/PACK



**Sandstone**

L620xW310xT5.35mm SPC535BEMA  
Wear Layer 0.55mm 10 PCS/CTN  
IXPE Layer 1mm 1.85 SQM/PACK



**Grey Marble**

L620xW310xT5.35mm SPC535GRMA  
Wear Layer 0.55mm 10 PCS/CTN  
IXPE Layer 1mm 1.85 SQM/PACK



**Anthracite Marble**

L620xW310xT5.35mm SPC535ANMA  
Wear Layer 0.55mm 10 PCS/CTN  
IXPE Layer 1mm 1.85 SQM/PACK



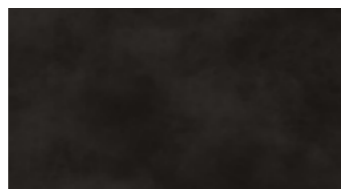
**Grey Onyx**

L620xW310xT5.35mm SPC535T805  
Wear Layer 0.55mm 10 PCS/CTN  
IXPE Layer 1mm 1.85 SQM/PACK



**Axis Grey**

L620xW310xT5.35mm SPC53583003-006  
Wear Layer 0.55mm 10 PCS/CTN  
IXPE Layer 1mm 1.85 SQM/PACK



**Oil Slate**

L620xW310xT5.35mm SPC535OISL  
Wear Layer 0.55mm 10 PCS/CTN  
IXPE Layer 1mm 1.85 SQM/PACK

# SPC Flooring

## Herringbone



**Ashton Grey**

L625xW125xT6mm SPCH6ASGR  
Wear Layer 0.55mm 22 PCS/CTN  
IXPE Layer 1mm 1.72 SQM/PACK



**Pebble Grey**

L625xW125xT6mm SPCH6PBGR  
Wear Layer 0.55mm 22 PCS/CTN  
IXPE Layer 1mm 1.72 SQM/PACK



**Midnight Grey**

L625xW125xT6mm SPCH6MDGR  
Wear Layer 0.55mm 22 PCS/CTN  
IXPE Layer 1mm 1.72 SQM/PACK



**Natural Oak**

L625xW125xT6mm SPCH6NAOK  
Wear Layer 0.55mm 22 PCS/CTN  
IXPE Layer 1mm 1.72 SQM/PACK



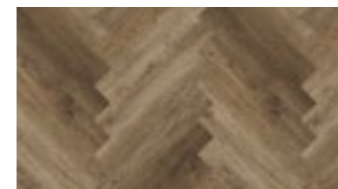
**Butternut Beige**

L625xW125xT6mm SPCH6BTBE  
Wear Layer 0.55mm 22 PCS/CTN  
IXPE Layer 1mm 1.72 SQM/PACK



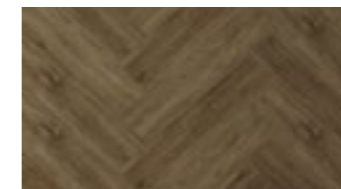
**Ivory Birch**

L625xW125xT6mm SPCH6VBH  
Wear Layer 0.55mm 22 PCS/CTN  
IXPE Layer 1mm 1.72 SQM/PACK



**Warm Walnut**

L625xW125xT6mm SPCH6WWNT  
Wear Layer 0.55mm 22 PCS/CTN  
IXPE Layer 1mm 1.72 SQM/PACK



**Chestnut Oak**

L625xW125xT6mm SPCH6CHOK  
Wear Layer 0.55mm 22 PCS/CTN  
IXPE Layer 1mm 1.72 SQM/PACK



*Carrara Marble*



*Ivory Birch*

# SPC Flooring

## Beading



**Pinnacle Bone**

L2400xW28xT16mm

SPCQRQR-PB



**Carrara Marble**

L2400xW28xT16mm

SPCQRQR-CM



**English Oak**

L2400xW28xT16mm

SPCQRQR-EO



**Victorian Oak**

L2400xW28xT16mm

SPCQRQR-VO



**Antique Country Oak**

L2400xW28xT16mm

SPCQRQR-ACO



**Light Grey Oak**

L2400xW28xT16mm

SPCQRQR-LGO



**Axis Grey**

L2400xW28xT16mm

SPCQRQR-AG



**Grey Onyx**

L2400xW28xT16mm

SPCQRQR-GX



**Grey Oak**

L2400xW28xT16mm

SPCQRQR-GO



**Black Wood**

L2400xW28xT16mm

SPCQRQR-BW



**Anthracite Marble**

L2400xW28xT16mm

SPCQRQR-AM



**White Oak**

L2400xW28xT16mm

SPCQRQR-WOK

# SPC Flooring

## Beading



**Grey Marble**

L2400xW28xT16mm

SPCQRQR-GM



**Oil Slate**

L2400xW28xT16mm

SPCQRQR-OLS



**Sandstone**

L2400xW28xT16mm

SPCQRQR-SS



**Medium Oak**

L2400xW28xT16mm

SPCQRQR-MOK



**Ashton Grey**

L2400xW28xT16mm

SPCQRHR-AG



**Pebble Grey**

L2400xW28xT16mm

SPCQRHR-PG



**Midnight Grey**

L2400xW28xT16mm

SPCQRHR-MG



**Natural Oak**

L2400xW28xT16mm

SPCQRHR-NO



**Butternut Beige**

L2400xW28xT16mm

SPCQRHR-BB



**Ivory Birch**

L2400xW28xT16mm

SPCQRHR-IB



**Warm Walnut**

L2400xW28xT16mm

SPCQRHR-WW



**Chestnut Oak**

L2400xW28xT16mm

SPCQRHR-CO

# SPC Flooring

## Azmin Collection



### Carbon Oak

L1220 x W183 x T6mm 101  
 Wear Layer 0.55mm 10 PCS/CTN  
 IXPE Layer 1.5mm 178 SQM/PACK



### Chestnut Oak

L1220 x W183 x T6mm 105  
 Wear Layer 0.55mm 10 PCS/CTN  
 IXPE Layer 1.5mm 178 SQM/PACK



### Oxford Gray

L1220 x W183 x T6mm 103  
 Wear Layer 0.55mm 10 PCS/CTN  
 IXPE Layer 1.5mm 178 SQM/PACK



### Sahara Oak

L1220 x W183 x T6mm 104  
 Wear Layer 0.55mm 10 PCS/CTN  
 IXPE Layer 1.5mm 178 SQM/PACK



### Silver Shadow

L1220 x W183 x T6mm 102  
 Wear Layer 0.55mm 10 PCS/CTN  
 IXPE Layer 1.5mm 178 SQM/PACK



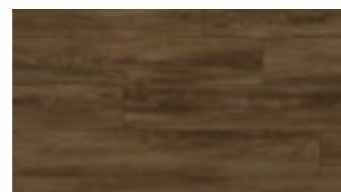
### Smoke Oak

L1220 x W183 x T6mm 107  
 Wear Layer 0.55mm 10 PCS/CTN  
 IXPE Layer 1.5mm 178 SQM/PACK



### Swiss Oak

L1220 x W183 x T6mm 106  
 Wear Layer 0.55mm 10 PCS/CTN  
 IXPE Layer 1.5mm 178 SQM/PACK



### Walnut Oak

L1220 x W183 x T6mm 108  
 Wear Layer 0.55mm 10 PCS/CTN  
 IXPE Layer 1.5mm 178 SQM/PACK

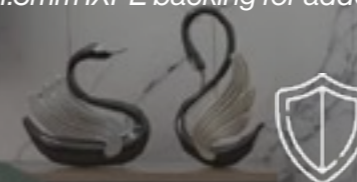


The Azmin Collection is our premium SPC range, featuring 6mm thick planks with a 0.55mm wear layer and 1.5mm IXPE backing for added comfort, durability, and sound insulation.



#### PREMIUM THICKNESS

Enhanced stability and underfoot comfort for high-traffic areas.



#### DURABLE & HARD WEARING

High-density SPC core offers excellent resistance to wear and impact. Ideal for busy commercial and residential environments.

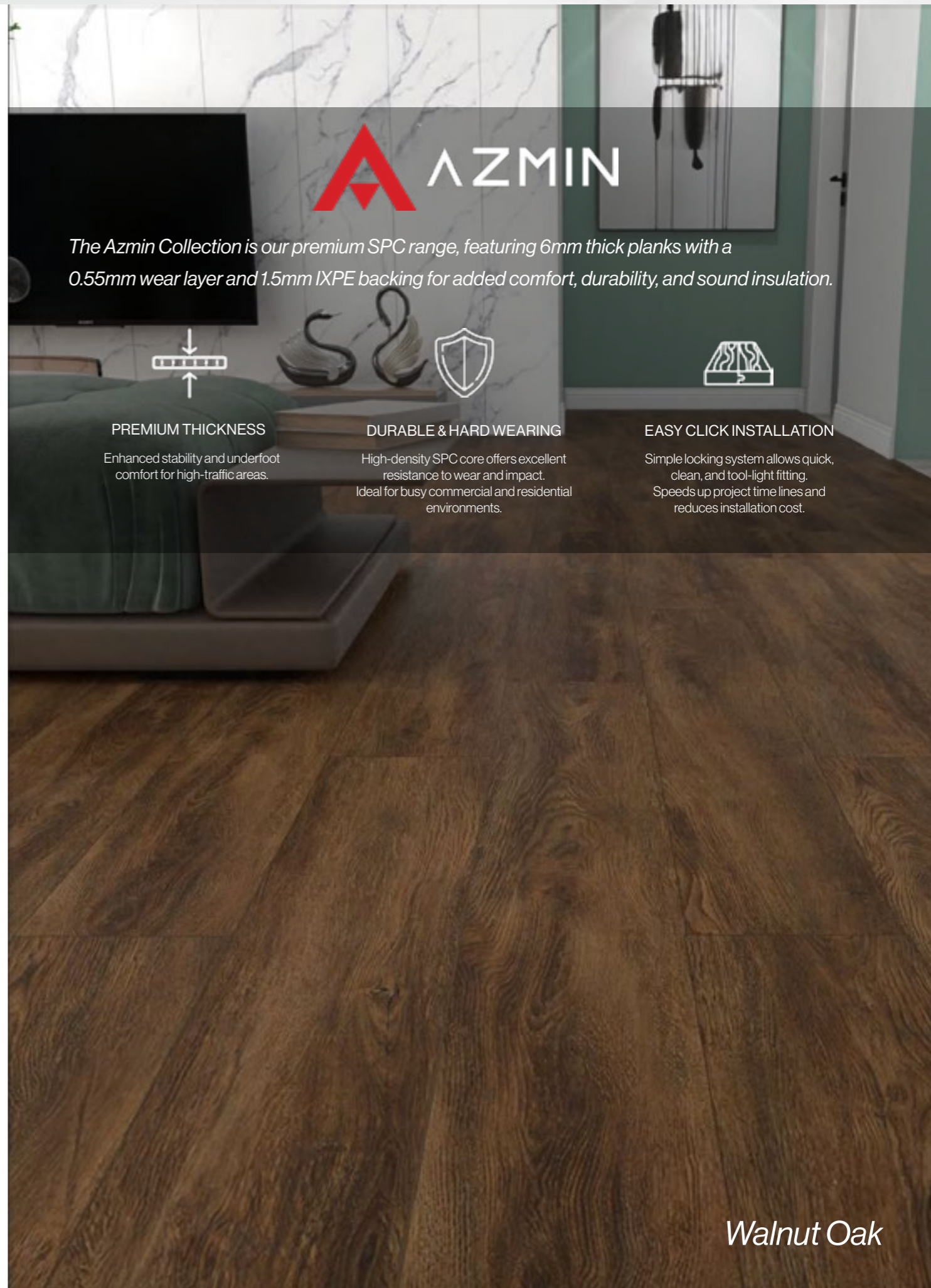


#### EASY CLICK INSTALLATION

Simple locking system allows quick, clean, and tool-light fitting. Speeds up project time lines and reduces installation cost.



Carbon Oak



Walnut Oak

# PS Skirting

Available in multiple sizes



## Bull Nose

L4200xW100xT15mm - 10pcs/ctn PSSKBN100  
L4200xW75xT15mm - 12pcs/ctn PSSKBN75



## Torus

L4200xW125xT15mm - 8pcs/ctn PSSKTA125  
L4200xW100xT15mm - 10pcs/ctn PSSKTA100  
L4200xW75xT15mm - 12pcs/ctn PSSKTA75



Bull Nose



Torus

# PLANT WALL

Our Plant Wall product brings nature indoors with a stunning garden design, perfect for adding a touch of greenery to any space. It's crafted for easy installation and low maintenance, providing a vibrant, lush look all year round. With its sleek and modern appeal, the Plant Wall transforms walls into living art, blending style and sustainability effortlessly.



## LIFELIKE NATURAL APPEARANCE

Realistic foliage with rich colour and depth. Creates a fresh, natural look without the maintenance.



## ZERO MAINTENANCE

No watering, pruning, or sunlight required. Keeps its vibrant look all year round with no upkeep.



## 3D TEXTURED DESIGN

Dense, layered greenery adds visual depth and dimension. Ideal for feature walls in homes, offices, and commercial spaces.



Desert Oasis



## English Boxwood

L500 x W500mm APW-CCGA033F  
Natural Foliage 12PCS/CTN



## Tropical

L500 x W500mm APW-CCGA037  
Natural Foliage 12PCS/CTN



## Dense Fern

L1000 x W1000mm APW-CCGA100  
Natural Foliage 5PCS/CTN



## Desert Oasis

L1000 x W1000mm APW-CCGA107  
Natural Foliage 5PCS/CTN



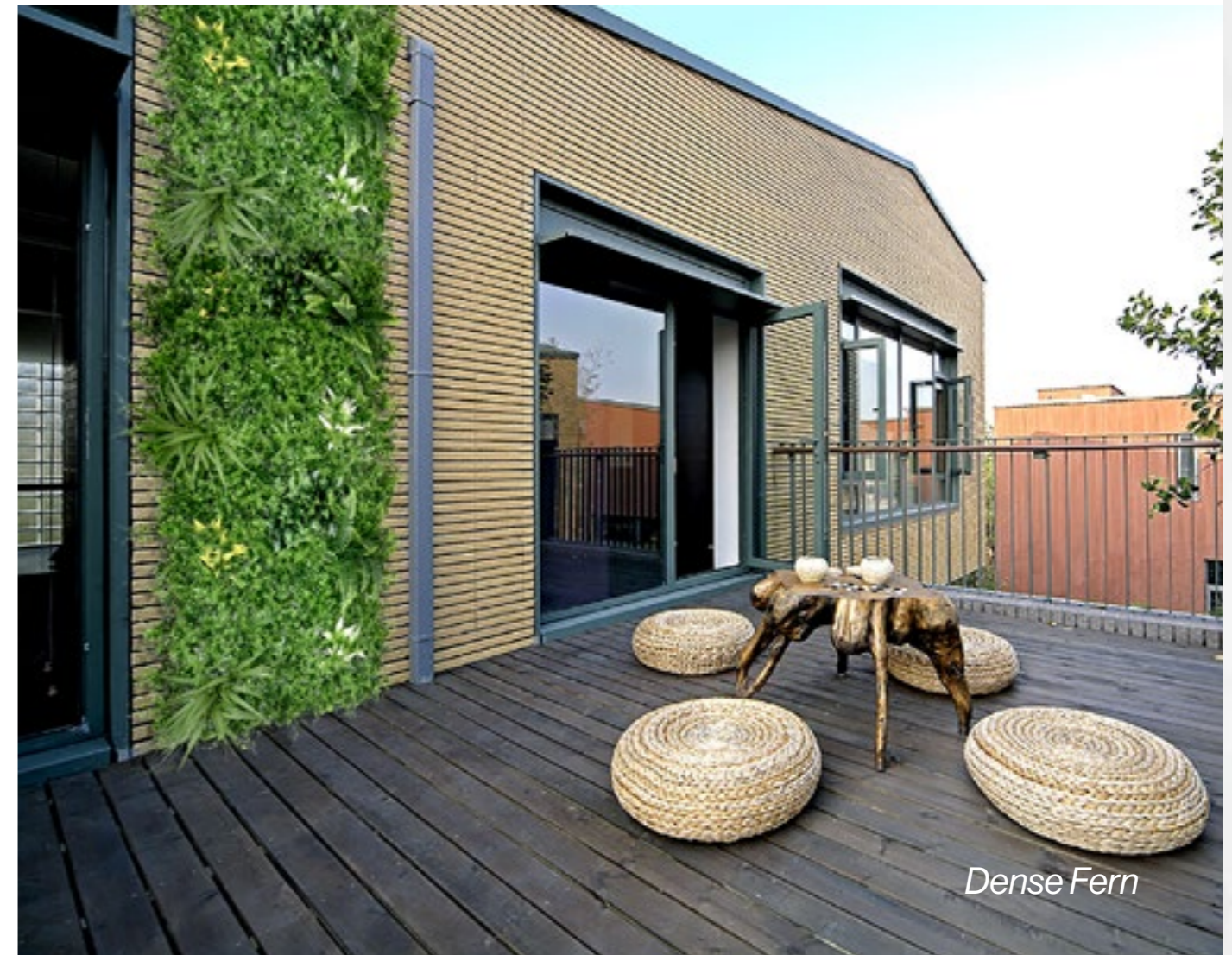
## Beauty Secret

L1000 x W1000mm APW-CCGA110M  
Natural Foliage 5PCS/CTN



## Bluish Spirit

L1000 x W1000mm APW-CCGF023  
Natural Foliage 5PCS/CTN



Dense Fern

# aluvo

A Brand by GretaGrove

Aluvo is a premium panel brand designed with one clear advantage: complete waterproof protection. Built for durability and style, Aluvo panels combine practical performance with modern design, making them ideal for spaces where moisture resistance is essential. Whether used in bathrooms, kitchens, or commercial interiors, Aluvo delivers a sleek finish that's easy to install, simple to maintain, and guaranteed to withstand everyday challenges.



## 100% WATERPROOF

Built to resist moisture and humidity. Vellura panels stay strong and flawless in any wet area.



## DURABLE

Built to withstand daily use while maintaining its premium finish year after year.



## SEAMLESS DESIGN

Interlocking edges create a smooth, continuous finish with minimal visible joints.



Natural Oak

## 3 Slat

2400mm x 250mm



### Natural Oak

L2400 X W250 X T20mm ALV2503SNO  
Smooth Grain 8 PCS/CTN



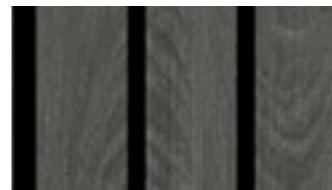
### Warm Walnut

L2400 X W250 X T20mm ALV2503SWW  
Smooth Grain 8 PCS/CTN



### Grey Oak

L2400 X W250 X T20mm ALV2503SGO  
Smooth Grain 8 PCS/CTN



### Black Wood

L2400 X W250 X T20mm ALV2503SBW  
Smooth Grain 8 PCS/CTN



Warm Walnut

# 4 Slats

2400mm x 250mm



**Natural Oak**

L2400 X W250 X T20mm ALV2504SNO  
Smooth Grain 8 PCS/CTN



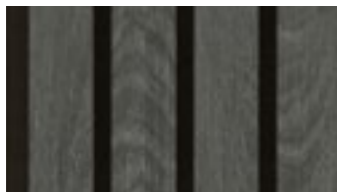
**Warm Walnut**

L2400 X W250 X T20mm ALV2504SWW  
Smooth Grain 8 PCS/CTN



**Grey Oak**

L2400 X W250 X T20mm ALV2504SGO  
Smooth Grain 8 PCS/CTN



**Black Wood**

L2400 X W250 X T20mm ALV2504SBW  
Smooth Grain 8 PCS/CTN

# 6 Slats

2400mm x 250mm



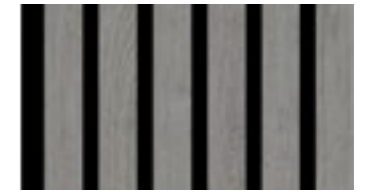
**Natural Oak**

L2400 X W250 X T20mm ALV2506SNO  
Smooth Grain 8 PCS/CTN



**Warm Walnut**

L2400 X W250 X T20mm ALV2506SWW  
Smooth Grain 8 PCS/CTN



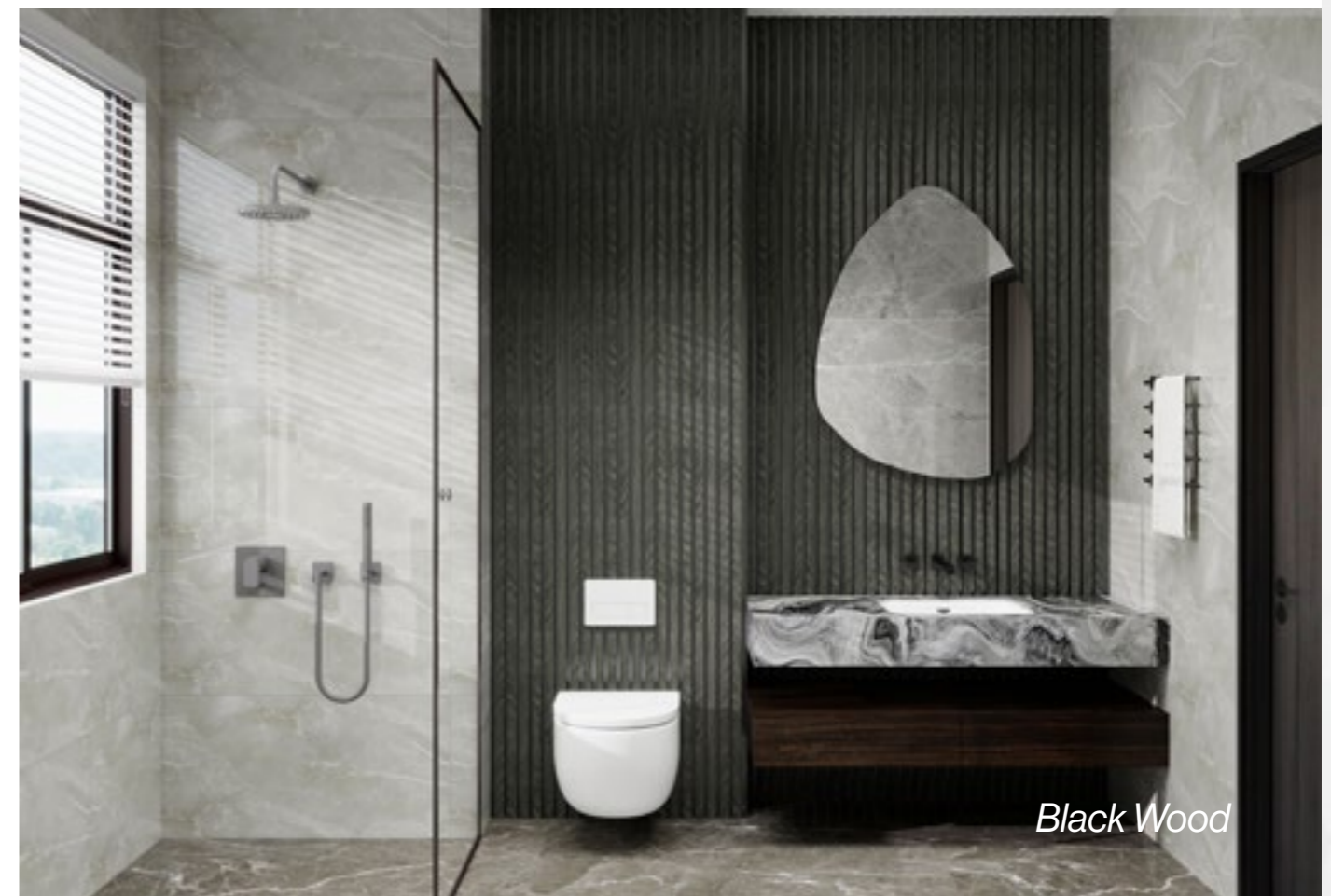
**Grey Oak**

L2400 X W250 X T20mm ALV2506SGO  
Smooth Grain 8 PCS/CTN



**Black Wood**

L2400 X W250 X T20mm ALV2506SBW  
Smooth Grain 8 PCS/CTN



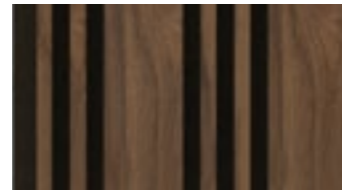
# LS Slats

2400mm x 250mm



## Natural Oak

L2400 X W250 X T20mm ALV250LSNO  
Smooth Grain 8 PCS/CTN



## Warm Walnut

L2400 X W250 X T20mm ALV250LSWW  
Smooth Grain 8 PCS/CTN



## Grey Oak

L2400 X W250 X T20mm ALV250LSGO  
Smooth Grain 8 PCS/CTN



## Black Wood

L2400 X W250 X T20mm ALV250LSBW  
Smooth Grain 8 PCS/CTN

# Half Round

2400mm x 120mm



## White

L2400 X W120 X T12mm ALV120HRWH  
Matt 19 PCS/CTN



## Cream

L2400 X W120 X T12mm ALV120HRCR  
Matt 19 PCS/CTN



## Taupe

L2400 X W120 X T12mm ALV120HRTP  
Matt 19 PCS/CTN



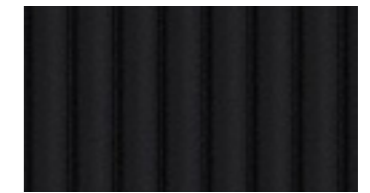
## Duck Egg

L2400 X W120 X T12mm ALV120HRDE  
Matt 19 PCS/CTN



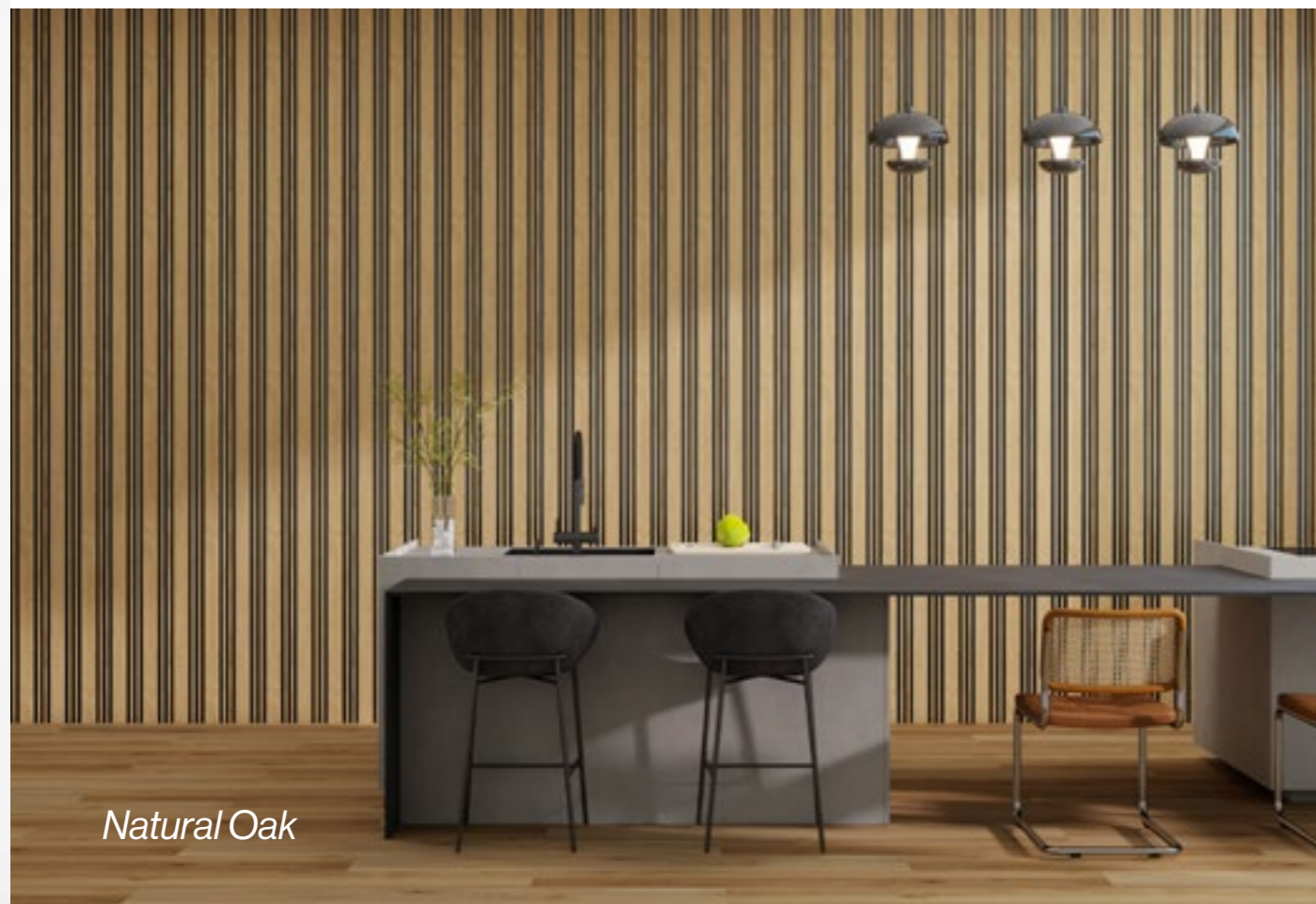
## Navy

L2400 X W120 X T12mm ALV120HRNV  
Matt 19 PCS/CTN



## Black

L2400 X W120 X T12mm ALV120HRBK  
Matt 19 PCS/CTN



Natural Oak



Duck Egg

# Curved Slats

2400mm x 250mm



## White

L2400XW250XT10mm ALV250CVWH  
Matt 10PCS/CTN



## Cream

L2400XW250XT10mm ALV250CVCR  
Matt 10PCS/CTN



## Taupe

L2400XW250XT10mm ALV250CVTP  
Matt 10PCS/CTN



## Duck egg

L2400XW250XT10mm ALV250CVDE  
Matt 10PCS/CTN



## Navy

L2400XW250XT10mm ALV250CVNV  
Matt 10PCS/CTN



## Black

L2400XW250XT10mm ALV250CVBK  
Matt 10PCS/CTN

# Weave Slats

2400mm x 120mm



## Woven Eggshell

L2400XW120XT12mm ALV120WVWE  
Textured Weave 19PCS/CTN



## Woven Greige

L2400XW120XT12mm ALV120WVWG  
Textured Weave 19PCS/CTN



## Beige Weave

L2400XW120XT12mm ALV120WVBW  
Textured Weave 19PCS/CTN



## Braided Steel

L2400XW120XT12mm ALV120WVBS  
Textured Weave 19PCS/CTN



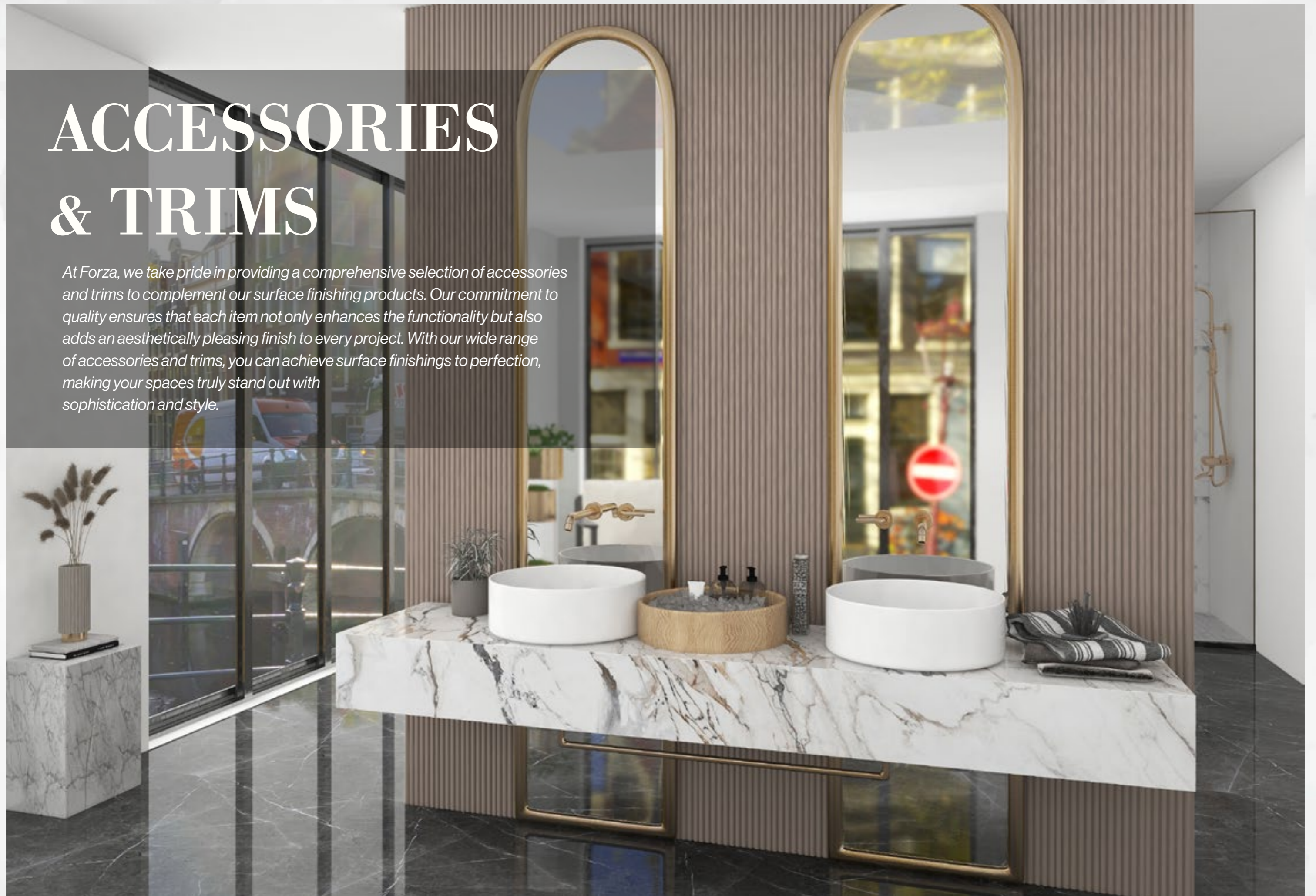
White



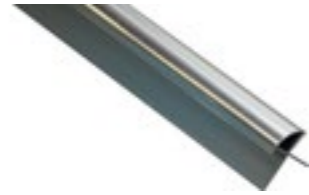
Braided Steel

# ACCESSORIES & TRIMS

*At Forza, we take pride in providing a comprehensive selection of accessories and trims to complement our surface finishing products. Our commitment to quality ensures that each item not only enhances the functionality but also adds an aesthetically pleasing finish to every project. With our wide range of accessories and trims, you can achieve surface finishings to perfection, making your spaces truly stand out with sophistication and style.*



# Aluminium Trims



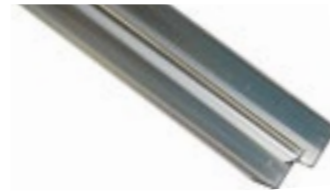
**External Tile Trim  
Bright Silver**

L2500mm x T10mm ALTR-25L-BRI



**H Tile Trim  
Bright Silver**

L2500mm x T10mm ALTR-HTR-BRSI



**Internal Tile Trim  
Bright Silver**

L2500mm x T10mm ALTR-INT-BRI



**U Tile Trim  
Bright Silver**

L2500mm x T10mm ALTR-UTR-BRI



**Curve Tile Trim  
Bright Silver**

L2500mm x T10mm ALTR-H0C-BRSI  
L2500mm x T12mm ALTR-H2C-BRSI



**Box Tile Trim  
Bright Silver**

L2500mm x T10mm ALTR-H0B-BRSI  
L2500mm x T12mm ALTR-H2B-BRSI



**Corner Trim - Matt  
Black**

L2500mm x T20mm ALTR-20L-MAB



**Corner Trim - Brushed  
Silver**

L2500mm x T20mm ALTR-20L-BRU



**Corner Trim - Bright  
Silver**

L2500mm x T20mm ALTR-20L-BRI



**Straight Tile Trim  
Matt Black**

L2500mm x T10mm ALTR-H0L-MAB  
L2500mm x T12mm ALTR-H2L-MAB



**Straight Tile Trim  
Bright Silver**

L2500mm x T10mm ALTR-H0L-BRI  
L2500mm x T12mm ALTR-H2L-BRI  
L2500mm x T25mm ALTR-25L-BRI



**Straight Tile Trim  
Brushed Silver**

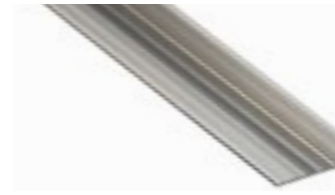
L2500mm x T10mm ALTR-H0L-BRSI  
L2500mm x T12mm ALTR-H2L-BRSI

# Aluminium Trims



**Straight Tile Trim  
Brushed Brass**

L2500mm x T10mm ALTR-H0L-BRG  
L2500mm x T12mm ALTR-H2L-BRG



**Straight Tile Trim  
Gun Metal Grey**

L2500mm x T10mm ALTR-H0L-GMG  
L2500mm x T12mm ALTR-H2L-GMG



**Straight Tile Trim  
Polished Copper**

L2500mm x T10mm ALTR-H0L-POC  
L2500mm x T12mm ALTR-H2L-POC



**Straight Tile Trim  
Brushed Copper**

L2500mm x T10mm ALTR-H0L-BRC  
L2500mm x T12mm ALTR-H2L-BRC



**H Trim**

L2500 x T3mm UV-ALTR-HTR



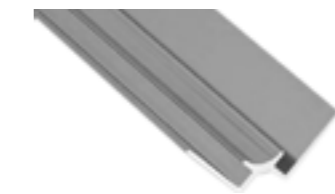
**UV External Trim**

L2500 x T3mm UV-ALTR-EXT



**UV U Trim**

L2500 x T3mm UV-ALTR-UTR



**UV Internal Trim**

L2500 x T3mm UV-ALTR-INT



**UV L Trim**

L2500 x T3mm UV-ALTR-LTR

# Shower Panel & Cladding Trims

# PVC Cladding Trims



**External - Black**

L2700xT8mm PVC8MMEXBL  
L2400xT10mm PVC10MMEXBL



**External - Chrome**

L2700xT8mm PVC8MMEXSI  
L2400xT10mm PVC10MMEXSI



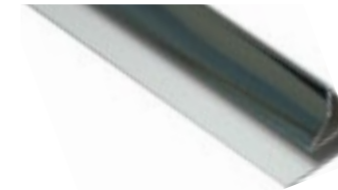
**External - White**

L2700xT8mm PVC8MMEXWH  
L2400xT10mm PVC10MMEXWH



**Cov Trim Black**

L2700xT8mm PVC8MMCOBL



**Cov Trim Chrome**

L2700xT8mm PVC8MMCOSI



**Cov Trim White**

L2700xT8mm PVC8MMCOWH



**H Trim - Black**

L2700xT8mm PVC8MMHTRBL  
L2400xT10mm PVC10MMHTRBL



**H Trim - Chrome**

L2700xT8mm PVC8MMHTRSI  
L2400xT10mm PVC10MMHTRSI



**H Trim - White**

L2700xT8mm PVC8MMHTRWH  
L2400xT10mm PVC10MMHTRWH



**Quad Trim Black**

L2700xT8mm PVC8MMQUBL



**Quad Trim Chrome**

L2700xT8mm PVC8MMQUSI



**Quad Trim White**

L2700xT8mm PVC8MMQUWH



**Internal - Black**

L2700xT8mm PVC8MMINBL  
L2400xT10mm PVC10MMINBL



**Internal - Chrome**

L2700xT8mm PVC8MMINSI  
L2400xT10mm PVC10MMINSI



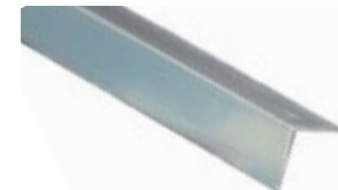
**Internal - White**

L2700xT8mm PVC8MMINWH  
L2400xT10mm PVC10MMINWH



**L Trim Black**

L2700xW25xT25mm PVC8MMLTBL



**L Trim Chrome**

L2700xW25xT25mm PVC8MMLTSI



**L Trim White**

L2700xW25xT25mm PVC8MMLTWH



**U Trim - Black**

L2700xT8mm PVC8MMUTBL  
L2400xT10mm PVC10MMUTBL



**U Trim - Chrome**

L2700xT8mm PVC8MMUTSI  
L2400xT10mm PVC10MMUTSI



**U Trim - White**

L2700xT8mm PVC8MMUTSI  
L2400xT10mm PVC10MMUTSI



**Tile Levelling System**

1mm,250 pcs/pack TLSCL1MM  
15mm,250 pcs/pack TLSCL15MM  
2mm,250 pcs/pack TLSCL2MM  
3mm,250 pcs/pack TLSCL3MM  
17packs/ctn



**Tile Wedges**

30packs/ctn TLSWEDGE



**Tile Leveling Pliers**

20packs/ctn LVLPLIR

A modern bathroom featuring a double vanity with white rectangular sinks and chrome faucets on a dark grey countertop. Above the vanity is a large, illuminated smart mirror displaying the time 8:51 and a reflection of a wooden door. The wall behind the vanity is covered in vertical wooden slats. To the right is a walk-in shower with a black frame, a large square showerhead, and a towel hanging on the side. The floor is dark grey with a circular patterned rug in the foreground.

# Style Quality Innovation

*At Forza, we are committed to delivering innovative, high-quality solutions that inspire creativity and elevate spaces. Whether you're designing a contemporary interior or enhancing outdoor aesthetics, our products are crafted to meet the highest standards of style, durability, and functionality. We look forward to partnering with you to bring your vision to life.*

*Let's create something extraordinary together.*



2026